



UTECONTEC
Industrial automation systems



Warehouse Management
System **WMS** - **SAM**



4500 m²
surface area



design
CAD - AUTOCAD - 3D



50 years
of experience



management
global



**problem
solving**



**production
qualified**



1968

CONTEC
Year of
establishment



uteco

1985

UTECO
Year of
establishment



1996

Year of merger
of the two
companies.
Birth of
UTECO CONTEC



UTECO CONTEC

2018

Fiftieth anniversary
UTECO CONTEC



WAREHOUSE MANAGEMENT SYSTEM **WMS** - SAM

The **WMS-SAM** software designed by Uteco Contec is a global warehouse management system (automatic and manual) and can be perfectly integrated with all the management systems of production and logistics companies. It can be used for the management and tracking of incoming and outgoing goods, flow and process optimisation, inventory control and statistical analysis.

It is an innovative tool with many functions in the basic package being a software with a development and expansion path of over **25 years**. The **WMS-SAM** includes all the functionalities to manage the loading units and their content, manages the logics for storage and the choice of material for manual and automatic picking, optimising the flows.



UTECO CONTEC
Industrial automation systems







MAIN **ADVANTAGES:**

- WMS software customisation.
- Optimisation of product handling times with increased productivity.
- Management of different types of physical structures such as: manual shelves, drive-in, ground blocks, macro locations.
- Automatic management of warehouse space.
- Reduced order processing times.
- Automatic Picking Management (Man to Man or Man to Goods)
- Reduction in the use of paper media and/or materials (picking lists)
- Increased operator productivity and reduced manual errors.
- Stock values always correct.
- Visualisation and traceability of warehouse activities.
- Greater control over product flows and information.
- Increased warehouse flexibility.
- Effectiveness of systems for monitoring and statistical analysis.

The **WMS-SAM** automatically generates all the necessary missions, with the organisational rules prepared by the company with a strategy aimed at optimising the use of spaces and their handling times.

As for the customisation of the WMS-SAM, it can be made according to any requests/needs from the customer; our personnel is available to verify the feasibility and evaluate its implementation.

The fundamental point of our WMS-SAM software is the **configurability and adaptability**, features that the system possesses natively, so much so as to meet the majority of the needs of every type of warehouse and this thanks to the high level of parametricity it has.

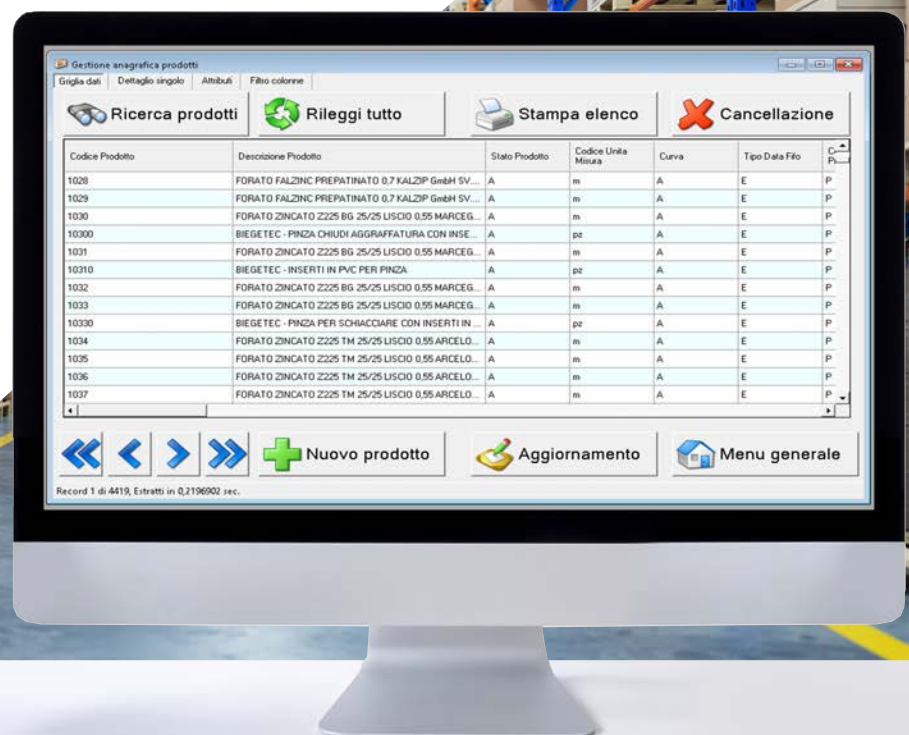
This approach makes our system very flexible in case there is a need for rapid changes in the course of company life, both for new features of the physical warehouse and for different handling modes.

BASIC MODULES AND TABLES:

- Warehouse Areas.
- Radio frequency terminals.
- Size classes (Pallet heights).
- Type of Product.
- Personal data archive:
 - Products.
 - Suppliers.
 - Customers.
 - Freight Forwarders/Couriers.
 - Users of use.
- Warehouse map.
- Acceptance/entry in Warehouse.
- Exit from Warehouse.
- Warehouse Movements (movements, refilling, etc.).
- Communication with:
 - Aisle cranes
 - Palletising systems
 - Radio frequency systems

CUSTOMISABLE MODULES AND TABLES:

- Personal data archive:
 - Freight Forwarders/Couriers.
 - Users of use.
- Warehouse statistics.
- Communication with handling systems.
- HOST communication.





GENERAL FEATURES **WMS** - SAM

Total mapping of the warehouse by location, product or Pallet

For the rapid consultation of stocks: by means of this function you can view the graphic map of the warehouse which shows the situation in real time according to the criteria of predefined allocation.

Management of mono and multi-product channels

The software is able to manage pallets with only one product inside, defined as "single-product" or pallets with different products defined as "multi-product", after initial association between pallet code and article codes contained in it, with also the management of different heights (dimensional classes).

Control of ABC classification of products and warehouse locations

this function allows the management of products by distinguishing between goods defined as high, medium and low rotation.

Distinction of warehouse locations

The software is able to manage pallets separately according to the type of product they contain, the type of container and the weight.

FIFO management/withdrawal mode

this operating principle allows the unloading operations of the warehouse to be carried out according to the FIFO date. (the date is assigned for each product and can assume the values of the incoming and outgoing production date).

Situazione magazzino

Grafica | Contenuto | Statistiche

	1	2	3	4	5	6	7	8	9	10	11	12	13	14	15	16	17	18	19	20	21	22	23	24	25	26	27	28	29	30	31	32	33	34	35	36	37	38	39	40	41	42	43	44	45	46	47	48	49	50	51	52
09	V	V	V	V	V	V	V	V	V	V	V	V	V	V	V	V	V	V	V	V	V	V	V	V	V	V	V	V	V	V	V	V	V	V	V	V	V	V	V	V	V	V	V	V	V	V	V	V	V	V		
08	V	V	V	V	V	V	V	V	V	V	V	V	V	V	V	V	V	V	V	V	V	V	V	V	V	V	V	V	V	V	V	V	V	V	V	V	V	V	V	V	V	V	V	V	V	V	V	V	V	V	V	
07	V	V	V	V	V	V	V	V	V	V	V	V	V	V	V	V	V	V	V	V	V	V	V	V	V	V	V	V	V	V	V	V	V	V	V	V	V	V	V	V	V	V	V	V	V	V	V	V	V	V	V	
06	V	V	V	V	V	V	V	V	V	V	V	V	V	V	V	V	V	V	V	V	V	V	V	V	V	V	V	V	V	V	V	V	V	V	V	V	V	V	V	V	V	V	V	V	V	V	V	V	V	V	V	
05	V	V	V	V	V	V	V	V	V	V	V	V	V	V	V	V	V	V	V	V	V	V	V	V	V	V	V	V	V	V	V	V	V	V	V	V	V	V	V	V	V	V	V	V	V	V	V	V	V	V	V	
04	V	V	V	V	V	V	V	V	V	V	V	V	V	V	V	V	V	V	V	V	V	V	V	V	V	V	V	V	V	V	V	V	V	V	V	V	V	V	V	V	V	V	V	V	V	V	V	V	V	V	V	
03	V	V	V	V	V	V	V	V	V	V	V	V	V	V	V	V	V	V	V	V	V	V	V	V	V	V	V	V	V	V	V	V	V	V	V	V	V	V	V	V	V	V	V	V	V	V	V	V	V	V	V	
02	V	V	V	V	V	V	V	V	V	V	V	V	V	V	V	V	V	V	V	V	V	V	V	V	V	V	V	V	V	V	V	V	V	V	V	V	V	V	V	V	V	V	V	V	V	V	V	V	V	V	V	
01	V	V	V	V	V	V	V	V	V	V	V	V	V	V	V	V	V	V	V	V	V	V	V	V	V	V	V	V	V	V	V	V	V	V	V	V	V	V	V	V	V	V	V	V	V	V	V	V	V	V	V	V

Riepilogo informazioni ubicazione selezionata:

Ubicazione: A02-002-003-01 Curva: A Numero Max Posti: 1 Tipo Locazione: S Stock

Classe Dimensionale: 1 Altezza max: 600mm. Stato Ubicazione: D OCCUPATA

Tipo Prodotto: P Prodotto generico Tipo Contenitore: P Europallet

Legenda:

- V Vuota
- D Occupata
- I Impegnata
- Disabilitata
- N Non disponibile

Codice Area: A02 Numero Scaffale: 002 Tipo: Occupazione di magazzino

Visualizzazione Menu generale

GENERAL FEATURES **WMS -** **SAM**



Management of conformity control of incoming goods data (data provided by the management):

The system is able to check if there is a correspondence between the data of the pallet entering the warehouse and those provided by the management system for example: product code, pallet size, weight and some personal data (Supplier; sccc; delivery date) if there is no correspondence, the pallet is discarded.



Automatic control of loading and unloading of goods by barcode

if the product is provided with a label, through this procedure it is possible to manage the incoming and outgoing goods automatically, by reading the bar code.



Search for the storage location according to "predefined logics" for each individual product:

through this function it is possible to search for the free location where to place the pallet. Processing is done by: Size class, weight, ABC classification, expiry date, product type, etc.



Management of picking logics with organisation of shipments.

Our program allows you to define the unloading sequence for the shipment based on standard criteria or defined with the customer during the analysis, for example: goods destination, truck arrival, unloading priority, type of product to unload



Historical management of all manual and/or automatic movements:

All movements made with our system, both manual and automatic, are stored in the archive. This table can be communicated or available to the client's management.



Warehouse inventory management.

This function allows to have in real time the stock situation for each product or storage location.



PACKING-LIST creation and printing

For printing the final output of the pallet.

Packing list for picking up the goods (Expenditure)



Optimisation of picking sequences to reduce loading/unloading times.

This characteristic determined by the analysis of the specifications and customised according to the customer's needs. In the case of a warehouse load, it is possible to indicate to the operator where the goods to be picked are located according to a sequence established on the basis of priority and route criteria and taking into account the presence of other operators carrying out handling operations.



Ricerca storico movimenti

Griglia dati | Dettaglio singolo | Filtra colonne

Ricerca storico

Rileggi tutto

Scegli tipo statistica:
Per Codice Prodotto

Statistiche

Dall Ubicazione	All Ubicazione	Codice Pallet	a Codice Pallet	Inviato Host	Data Movimento	Ora Inizio	Ora Fine	Codice Tipo Movimento	Codice Cambio	Sigla Operatore	C/C
A02-001-003-01-01	U01	10	10	X	24/06/2020	12:27:20	12:38:07	US	T01		SP
A02-002-027-01-01	A02-002-022-07-01	01	01	X	24/06/2020	13:36:25	13:37:14	SP	T01		
A02-001-009-03-01	A02-002-027-01-01	01	01	X	24/06/2020	12:41:29	12:42:16	SP	T01		
A02-002-022-08-01	A02-001-009-03-01	01	01	X	24/06/2020	12:40:38	12:41:27	SP	T01		
A02-002-007-08-01	A02-002-022-08-01	01	01	X	24/06/2020	12:39:51	12:40:37	SP	T01		
A02-001-032-02-01	A02-002-007-08-01	01	01	X	24/06/2020	12:38:59	12:39:48	SP	T01		
A02-001-033-07-01	A02-001-032-02-01	01	01	X	24/06/2020	12:38:09	12:38:57	SP	T01		
A02-002-037-09-01	A02-001-033-07-01	01	01	X	24/06/2020	12:37:24	12:38:08	SP	T01		
A02-002-001-04-01	A02-002-037-09-01	01	01	X	24/06/2020	12:36:30	12:37:23	SP	T01		
A02-002-030-06-01	A02-002-001-04-01	01	01	X	24/06/2020	12:35:36	12:36:28	SP	T01		
A02-001-003-05-01	A02-002-030-06-01	01	01	X	24/06/2020	12:34:45	12:35:35	SP	T01		
A02-002-029-03-01	A02-001-003-05-01	01	01	X	24/06/2020	12:33:53	12:34:43	SP	T01		
A02-001-001-05-01	A02-002-029-03-01	01	01	X	24/06/2020	12:32:52	12:33:50	SP	T01		
S01	A02-002-006-01-01	11	11	X	24/06/2020	12:32:04	12:32:51	EN	T01		
A02-001-008-08-01	A02-001-001-05-01	01	01	X	24/06/2020	12:31:05	12:32:04	SP	T01		
S01	A02-001-002-01-01	12	12	X	24/06/2020	12:30:16	12:31:05	EN	T01		

Record 1 di 872. Estratti in 0,1561414 sec.

Stampa elenco

Menu generale



ADDITIONAL AND COMPLEMENTARY MODULES **WMS** - **SAM**

Among the main features of our WMS-SAM software it is possible to add additional modules even after the first installation without any reduction in operation or loss of investment already made:

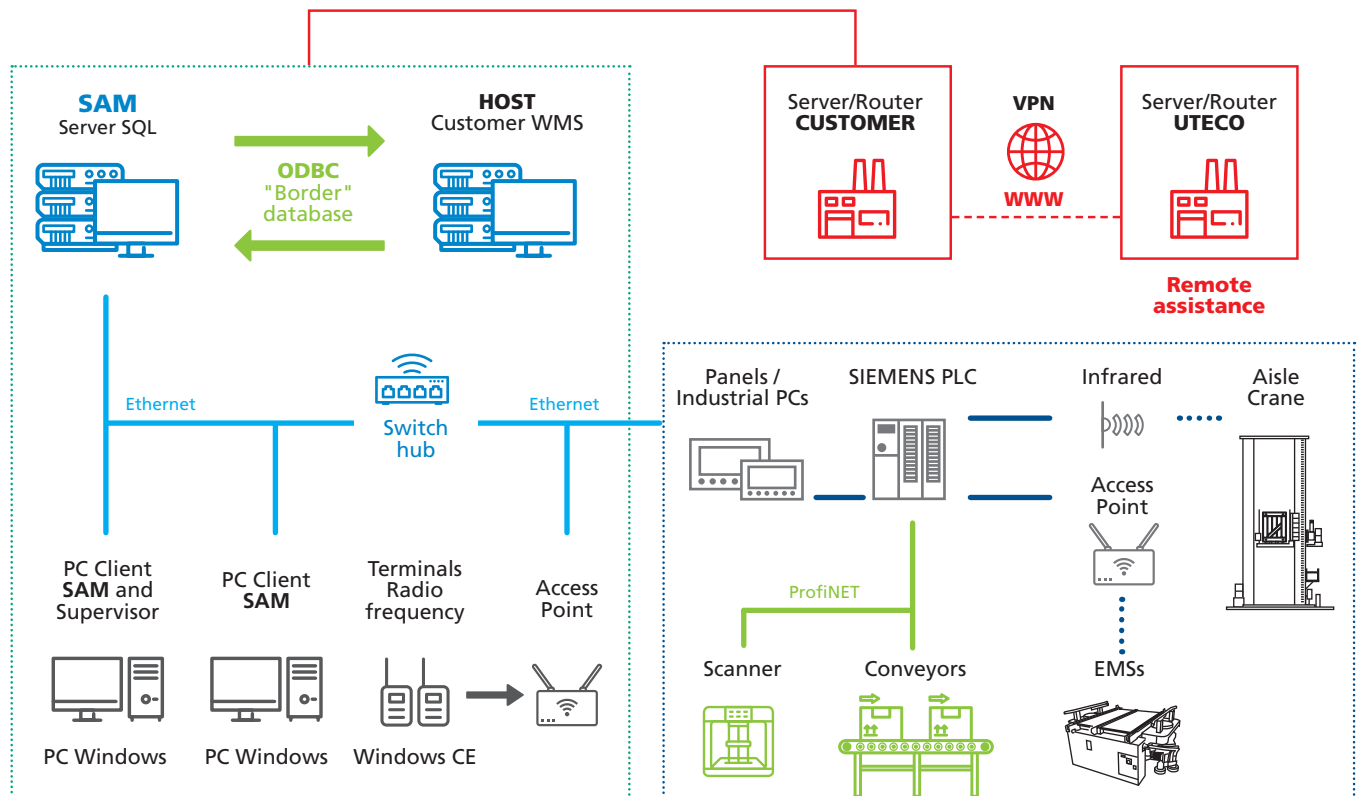
- **Flow management** of goods with portable terminals connected in radio frequency.
- **Manage different areas** of Picking and/or Refilling.
- **Interconnection capacity** with third party automatic systems such as, Palletising, Wrapping and Strapping, data exchange with automatic handling systems such as, AGV, LGV, Trolleys and pallet conveyors.

Complementary functions can be implemented in the software, such as the compacting and reorganisation of pallets in the automatic warehouse; these operations, which are usually carried out during the hours when the plant is not in use (e.g. at night and/or at the end of the shift), make it possible to optimise the warehouse in terms of space and time.

Here are some examples of the add-on modules chosen by our customers:

- **Reallocation** for A-B-C curve.
- **Reorganisation** by size class.
- **Channel turning** for rigid and optimised FIFO.
- **For shipping area** return to stock in case of non-dispatch.

EXAMPLE OF NETWORK STRUCTURE





ASSISTANCE AND MAINTENANCE

UTECO CONTEC continues to assist the customer after the product has been delivered with qualified and ensured after-sales services, which are particularly essential during the first phases of use of more complex installations, where operators need to become familiar with the system.

UTECO-CONTEC can constantly monitor the efficiency of each component and provide a remote assistance service, with immediate intervention through a dedicated telephone line, for the diagnosis and quick solution of any malfunction.

In addition to these opportunities there are also maintenance and scheduled assistance contracts that UTECO CONTEC can personalise based on the needs of the installation and/or customer, thus guaranteeing optimal operation and long service life of installations.



REFERENCES

AB|MAURI



ALCEA



Bavli

BERNER



BONFIGLIOLI
Power & Control Solutions

bofrost



CAVIRO

COMPLASTEX[®]
SEALING'S INNOVATION

CONAD

DIAGEO



E. B.

Eco Eridania



FATER

FCA
FIAT CHRYSLER AUTOMOBILES

GEN-ART



Grandi Salumifici Italiani



JUNGHEINRICH



MENZ & GASSER

Motta



NeroGiardini



NINZ
PIREDORE

Nutkao

OROGEL

PERFETTI
MILK

PIRELLI

PONTI
DAL 1887

REVOLTI[®]
LATTONERIE

Rigoni
di Asiago



VIPA
By VIPA buy better

zarri



UTECO CONTEC

Industrial automation systems

Uteco Contec Srl

V. Grieco 1/E, 41011 Campogalliano (MO) - Italy
tel: +39 059 5221811 - fax: +39 059 5221888
info@utecocontec.it - www.utecocontec.it

